

Raine&Horne Commercial

Contact Steve Dick
0425 302 771

Type Offices

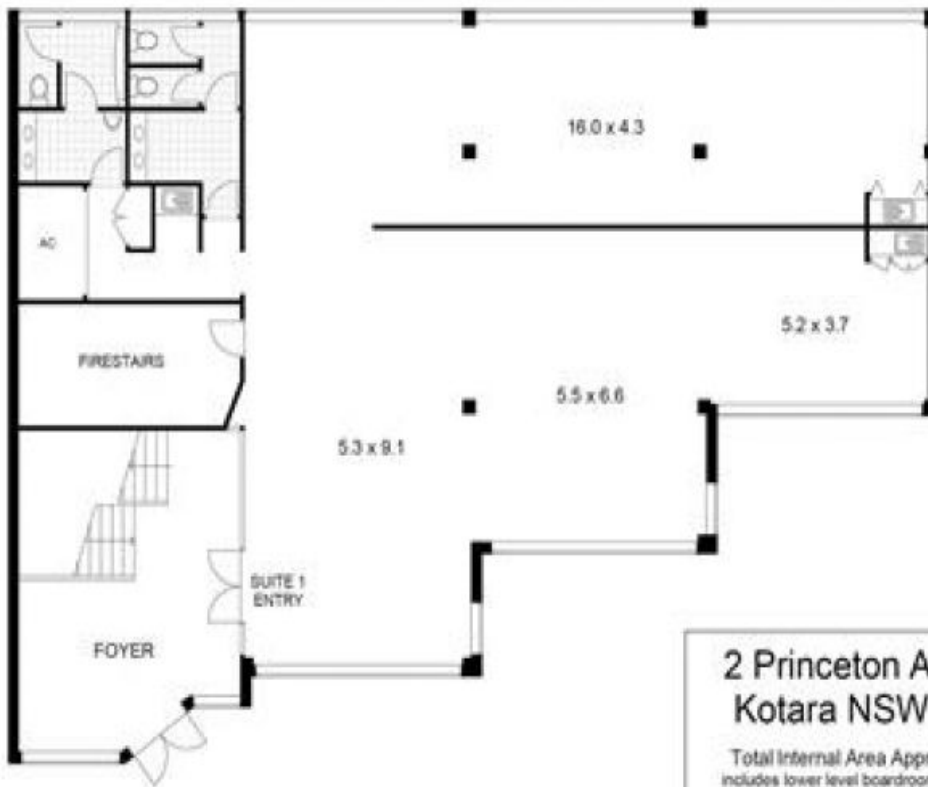
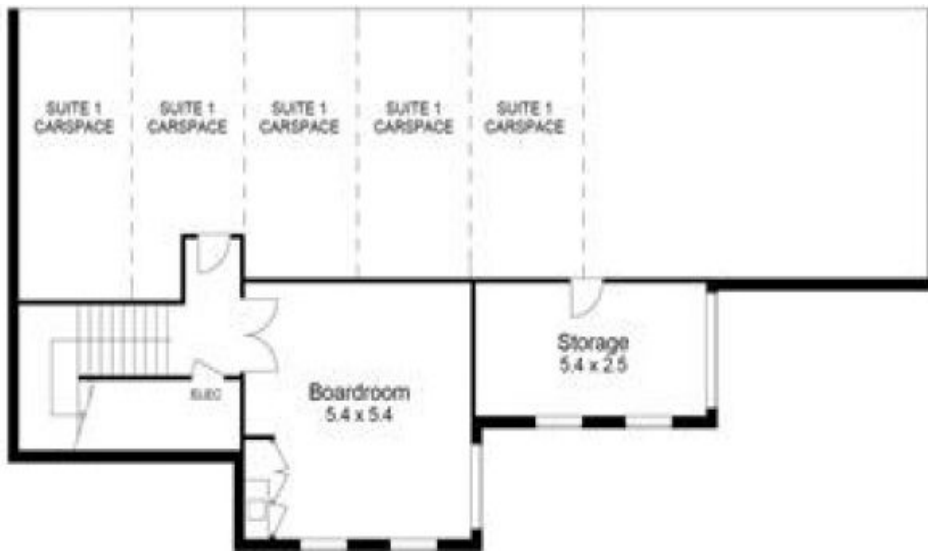
(Suite 1)/2 Princeton Avenue, Kotara Corporate Offices With Parking

Building Area: 243m² (approx)

These corporate ground floor offices are located in the Belair Commercial Centre opposite the Westfield Kotara Shopping Centre on a highly exposed corner and includes many features that are not directly visible from the street featuring:

- Large open plan office
- Ducted air-conditioning
- Data cabling
- Separate boardroom
- Security alarm





**2 Princeton Avenue
 Kotara NSW 2289**

Total Internal Area Approx: 250m²
 includes lower level boardroom and storage
 (excludes foyer and firestairs)
 (areas taken from the interior of the external walls)

Raine & Horne
 Commercial

Disclaimer: Raine & Horne Drafting and Property Services Pty Ltd. These plans are to be used for advertising purposes only, and should not be used as a contract. We accept no responsibility for any errors or inaccuracies contained in this document. Interested parties should rely on their own enquiries. Plans shown are only indicative of layout. Dimensions are approximate.