

## Raine&Horne Commercial

**Contact** Paul Tilden  
0425 302 772

**Type** Retail

**Land** 5060m2

## Shop 8/4a Garnett Road, East Maitland NEAT COMMERCIAL SUITE

Building Area: 157m2(approx)

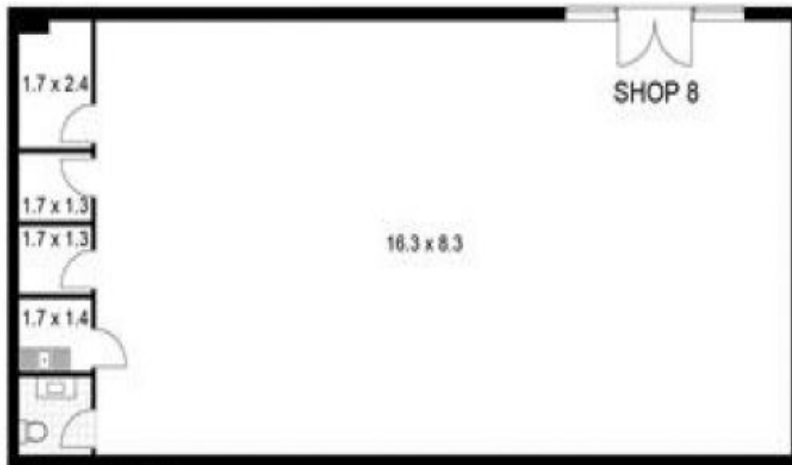
This office or retail space is located opposite the newly developed Stockland's Greenhills shopping centre.

Features include:

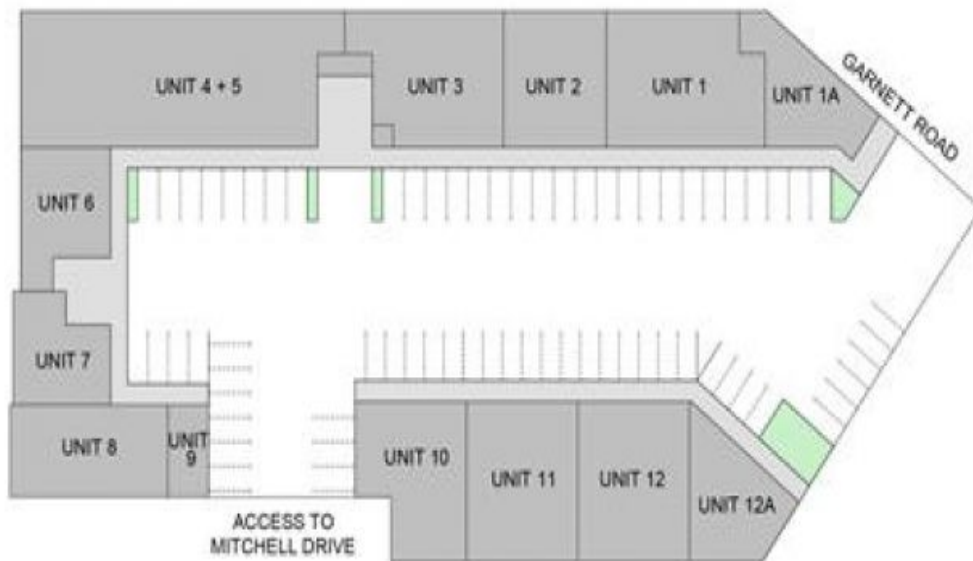
- \* Open plan layout.
- \* Air conditioned throughout.
- \* On site customer car parking.
- \* Suspended grid ceiling.
- \* Good storage rooms.

The complex has a diverse range of business operating from the complex including the Salvo's, F45 training studio, Elders Insurance





**FLOOR PLAN**  
SCALE APPROX 1:150



- UNIT 1A APPROX: 109m<sup>2</sup>
- UNIT 1 APPROX: 217m<sup>2</sup>
- UNIT 2 APPROX: 147m<sup>2</sup>
- UNIT 3 APPROX: 195m<sup>2</sup>
- UNIT 4+5 APPROX: 440m<sup>2</sup>
- UNIT 6 APPROX: 114m<sup>2</sup>
- UNIT 7 APPROX: 99m<sup>2</sup>
- UNIT 8 APPROX: 150m<sup>2</sup>
- UNIT 9 APPROX: 37m<sup>2</sup>
- UNIT 8 APPROX: 150m<sup>2</sup>
- UNIT 9 APPROX: 37m<sup>2</sup>
- UNIT 10 APPROX: 162m<sup>2</sup>
- UNIT 11 APPROX: 189m<sup>2</sup>
- UNIT 12 APPROX: 189m<sup>2</sup>
- UNIT 12A APPROX: 114m<sup>2</sup>

**SITEPLAN**  
SCALE APPROX 1:750

Greenhills Village  
East Maitland NSW 2323  
(areas taken from the interior of the external walls)

**Raine & Horne**  
Commercial

Disclaimer - Raine & Horne Drafting and Designers to produce accurate floor plans. These plans are to be used for advertising purposes only and should not be used as such. We accept no responsibility for any errors or omissions contained in this document. Interested persons should rely on their own enquiries. Plans shown are only indicative of layout. Dimensions are approximate.