

## Raine&Horne Commercial

**Contact** Paul Tilden  
0425 302 772

**Type** Offices

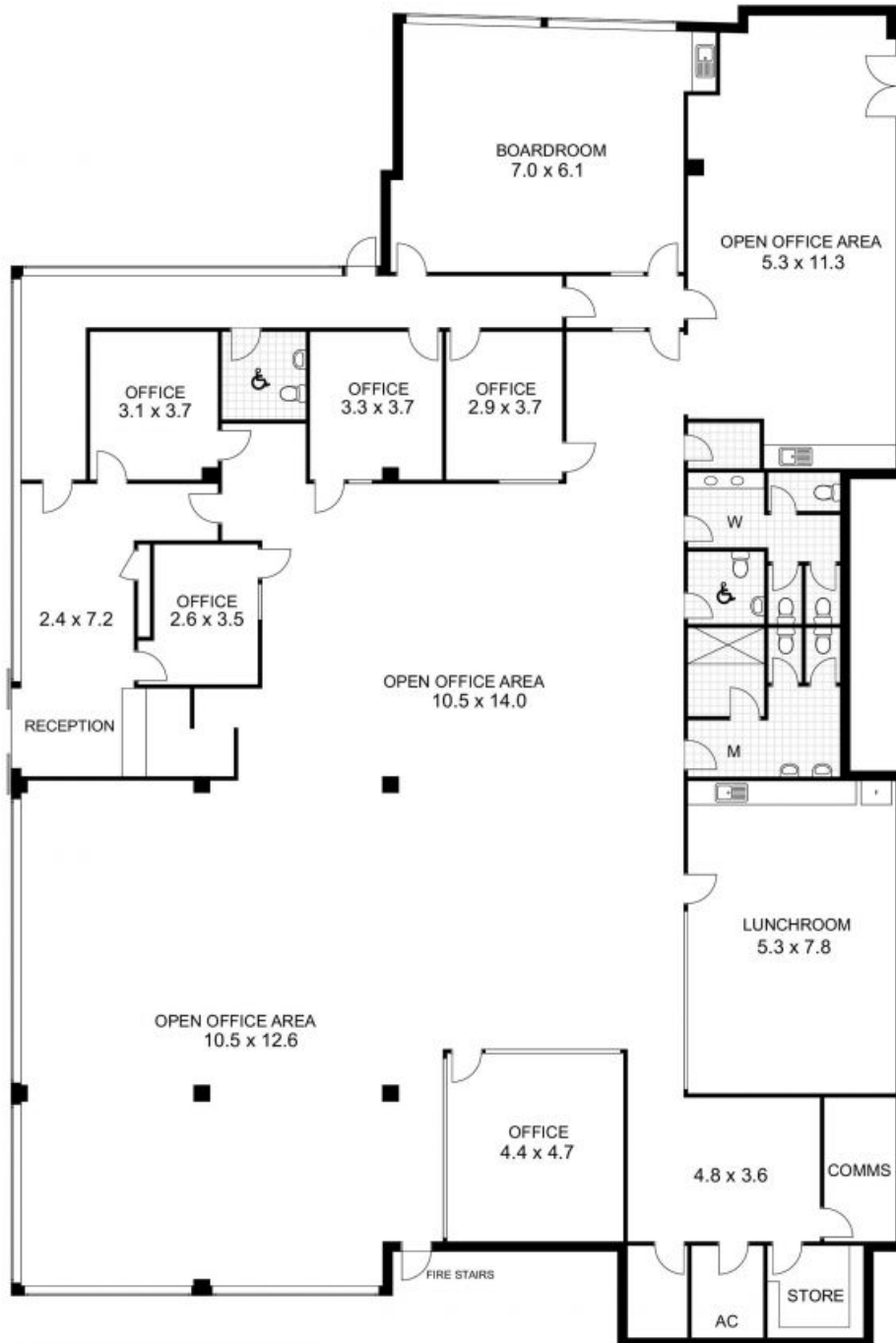
## Ground Flo/23 St Andrews Street, Maitland Large Office Space With Parking

Ground Floor offices currently occupied by a Government agency and located opposite the Maitland Police Station. Key features include:

- \* Automatic entry door to reception area
- \* Open plan offices with work stations
- \* Managers office
- \* Huge board room or training area
- \* Excellent staff amenities
- \* Internal access to the secured car parking

Finding well presented offices that comply with Government requirements in the CBD can be difficult to come by. Do not delay in making your enquiry on this property.





23 St Andrews St (Ground Floor)  
 Maitland NSW 2320  
 Total Area Approx: 615m<sup>2</sup>  
 (areas taken from the interior of the external walls)



SCALE APPROX 1:150



**Raine & Horne**  
 Commercial

Disclaimer for Real Estate Drafting. These plans are to be used for advertising purposes only. Interested persons should rely on their own enquiries. Plans shown are only indicative of layout. Dimensions are approximate. ©